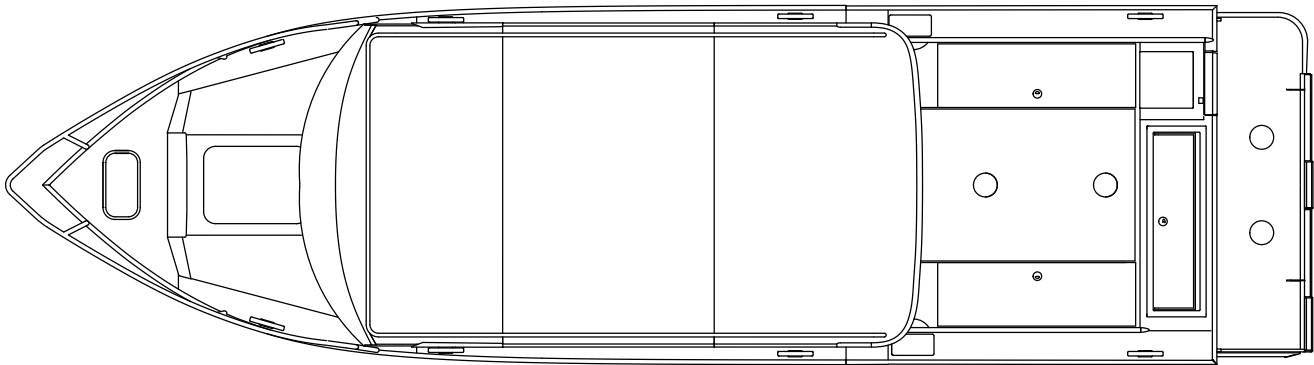


PACIFIC EXPLORER HARD TOP W/ EXTENDED TRANSOM



MEASUREMENT	270 PE ET HT
Hard top type	MLC
Length	27' 11"
Total Length	30' 4"
Beam (in)	102
Dead Rise: Forward X Amidship X Aft (degrees)	45 X 18 X 15
Bottom Dimensions: Thickness X Width (in)	0.25 X 96
Side Dimensions: Thickness X Height (in)	0.16 X 42
Transom Dimensions: Width X Height (in)	100.5 X 21
Person Capacity: Quantity X Weight (lbs)*	10 X 1650
Maximum Fuel Capacity (gal)	190
Maximum Horsepower (HP)	500
Maximum Capacity (lbs)*	5697
Boat Dry Weight (lbs)	6900
Fishing Cockpit: Width X Length (in)	77 X 91
Seat-To-Transom: Length (in)	N/A
Bow Length (in)	N/A
Cabin: Width X Length (in) X Height (in)	84 X 112 X 79
V-Berth: Width X Length X Height (in)	61 X 72 X 93

* Recommendations only for boats over 20'

NOTE: Measurements are approximations only. Variations will occur due to tolerances in manufacturing

Hewes Marine Product Specifications 2021 MY Rev A